

MATTHEW JAMES

Residential Sales • Lettings • Management



Chetwynd Road, London, NW5 1DJ

£2,500 Per Calendar Month

A two double bedroom flat with terrace arranged over the top two floors of a Victorian building in the heart of Dartmouth Park. The property is a short walk from Parliament Hill Fields with its array of amenities including a lido, tennis courts, running track and cafes beyond which are the wide open spaces of Hampstead Heath. The area also offers a lovely selection of shops and places to eat and drink as well as excellent transport links with Kentish Town, Gospel Oak and Tufnell Park underground stations within a short walk. Offered mostly unfurnished. Available from 22nd April.

First Floor Entrance

Half Landing

Door to roof terrace.

Second Floor

Lounge



This 'L' shaped room has three arched sash windows and inset halogen ceiling lights.

Kitchen



A good range of white fitted wall and base units with rolled top preparation surfaces. There is a stainless steel integrated oven with 4 ring gas hob, a stainless steel single sink and drainer, washing machine, tall fridge/freezer and splash back tiling.

Bathroom/WC



A white suite comprising of a panel enclosed bath with wall mounted shower, low flush WC and pedestal wash basin.

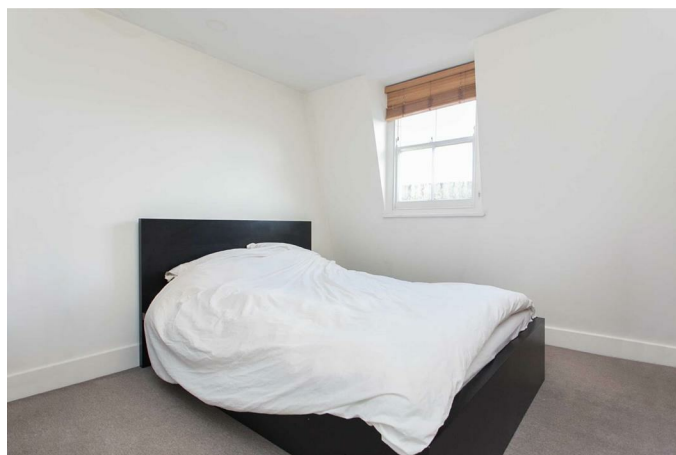
Top Floor

Bedroom One



Double bedroom with twin sash windows.

Bedroom Two



Double bedroom with sash Window.

Roof Terrace

The terrace is tiled with brick perimeter wall. South East Facing.

Additional Information

Camden Council Tax Band E

Holding Deposit Equivalent To 1 Weeks Rent e.g. 1

x £576 = £576

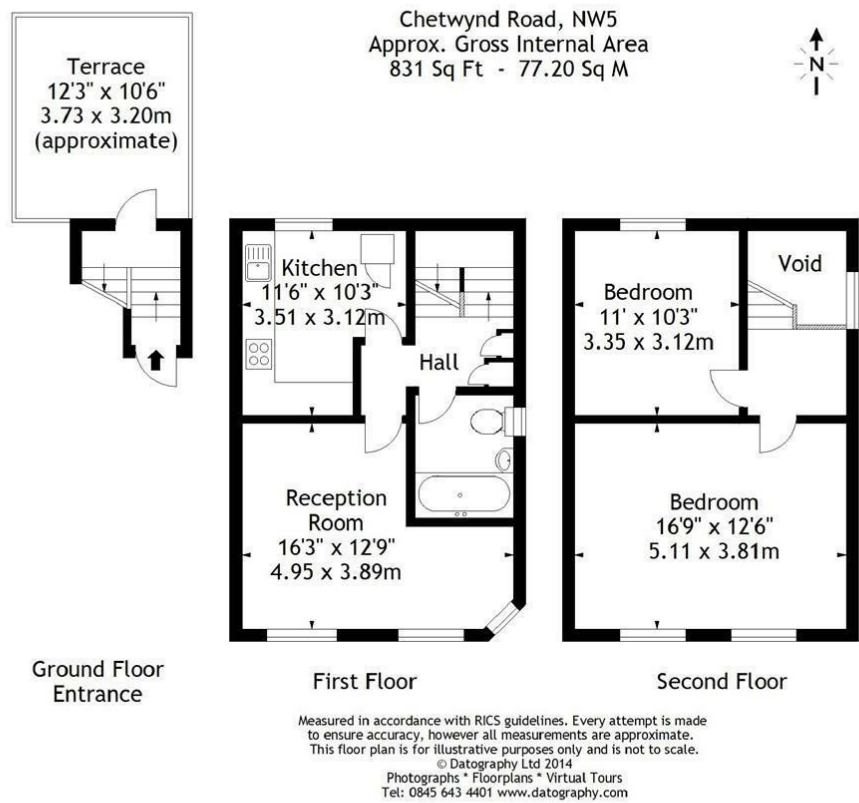
Full Deposit Equivalent to 5 Weeks Deposit e.g. 5 x

£576 = £2,880

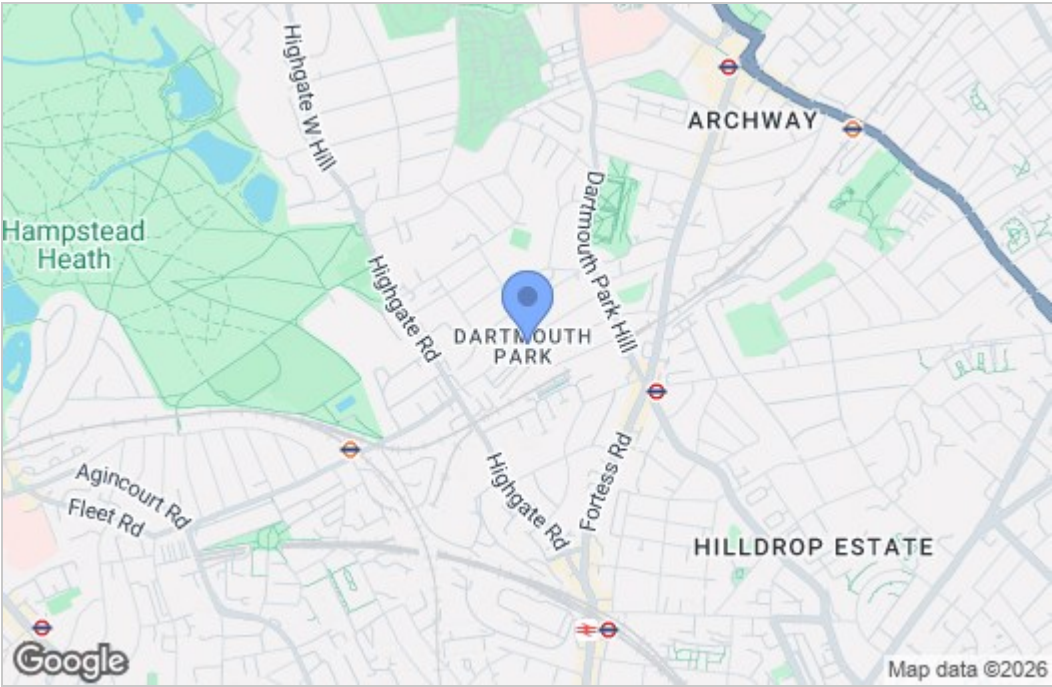
Mostly Unfurnished

Available From 22nd April

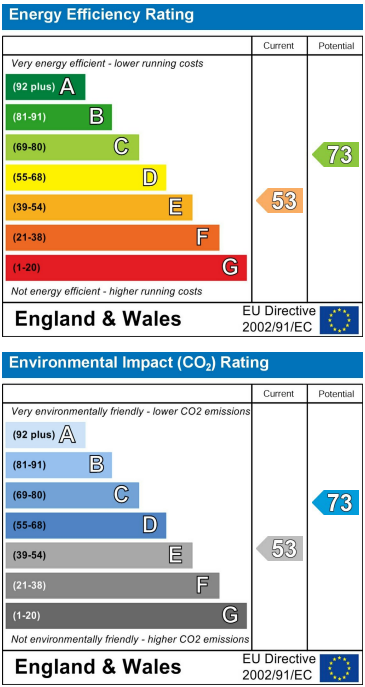
Floor Plan



Area Map



Energy Efficiency Graph



These particulars, whilst believed to be accurate are set out as a general outline only for guidance and do not constitute any part of an offer or contract. Intending purchasers should not rely on them as statements of representation of fact, but must satisfy themselves by inspection or otherwise as to their accuracy. No person in this firms employment has the authority to make or give any representation or warranty in respect of the property.